



MINSKPROMSTROY

building since 1946



MINSKPROMSTROY
JOINT-STOCK COMPANY





DASHKEVICH
OLEG VLADIMIROVICH
General director

“The more complex the project, the more interesting it is for us to work. When there are a task, and, most importantly, the means to implement it, then the excitement appears.

Creating objects of increased complexity is a professional pleasure.

We are willing to undertake large-scale projects, because we have experience and understanding of the process.”

A stylized, handwritten signature in blue ink, consisting of several sweeping, overlapping strokes.



Bolbasovo airport, Orsha



Bolbasovo is an international cargo airfield located in the multimodal industrial and logistics complex “Bremino-Orsha” in the urban village of Bolbasovo, 18 kilometers from Orsha. There is also OJSC “Orsha Aircraft Repair Plant”. The runway of the airfield has been awarded the International status.

Now, here they can accept and send direct cargo flights, as well as civil aircrafts.

The airfield should become a major cargo hub.



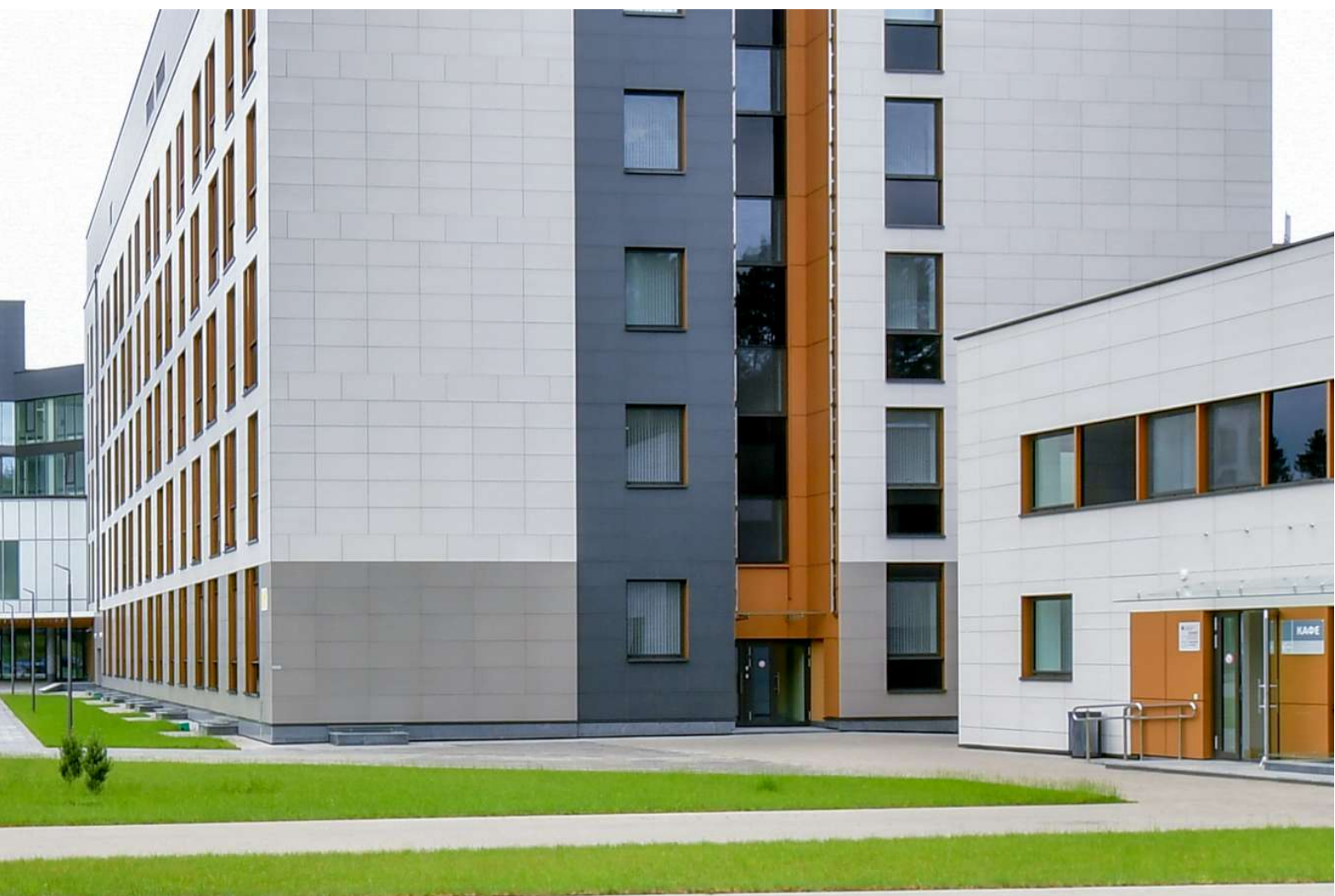


The State Institution "Republican Clinical Medical Center"
of the Office of the President of the Republic of Belarus



The State Institution "Republican Clinical Medical Center" of the Office of the President of the Republic of Belarus is a multidisciplinary medical center equipped with the most modern high-tech medical equipment.

The center provides more than 350 types of primary, specialized and high-tech medical care in 55 specialties: from outpatient and treatment and diagnostic, to surgical and rehabilitation.





School, Obninsk, Russia



«Kindergarten number 2, Kopische village", Minsk region



"General educational institution for 1000 places in the microdistrict N 1 of the residential area "Zaovrazhie" of Obninsk city". The building as a complex shape consists of 6 blocks. Building area is 6,967.0 m². The total area of the building is 18 691.13 m². The total construction volume of the building is 84,476.11 m³. Floors' number - 3 floors + technical underground. The height of the floor is 3.6 m, the assembly hall is 7.5 m, the large gym is 8 m, the small gym is 7.5 m. The number of students is 1,000 children (40 study groups for 25 people).

The facade of the kindergarten "Yellow Giraffe" is well recognized: four "icebergs" strewn with bright dots. There is a new playground nearby, the territory of the preschool institution is fenced, video cameras are installed at the entrance. The kindergarten is very different from typical institutions: huge toys, two-level groups and a slide-pipe leading from the second floor to the first.

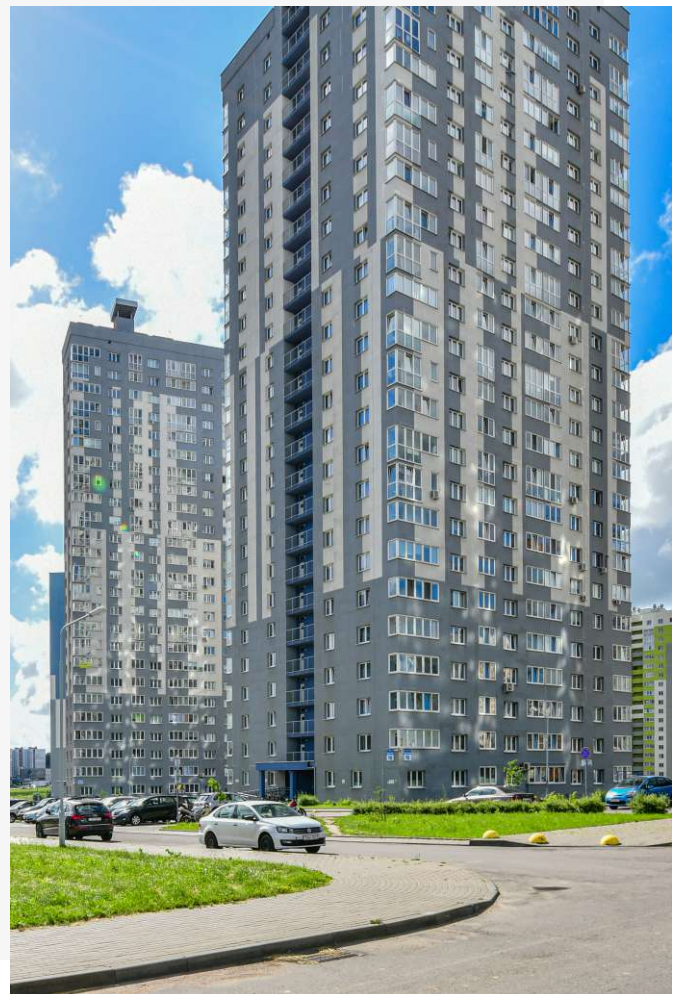
The theme of the "Kosmos" kindergarten is clear from the name. At the entrance of the kindergarten, visitors are greeted by a huge rocket. There are also two-level groups, expositions for the exhibition of children's works, a modern kitchen and a medical unit. The rooms are decorated with stars, rockets and planets, decorated with spaceships and mission control centers.



«Kindergarten number 3, Kopische village», Minsk region



Residential building on the Independence street, Minsk



Residential buildings on the Churlionis street, Minsk



For more than 25 years, OJSC “Minskpromstroy” has been building houses, acting as a customer, designer and contractor.

Our position is to build with excellent quality and in the shortest possible time. A comprehensive approach to the projects ensures complete satisfaction of customer requirements.



Residential building on the Yana Chechota street, Minsk



Residential complex "Prestizhino", Minsk

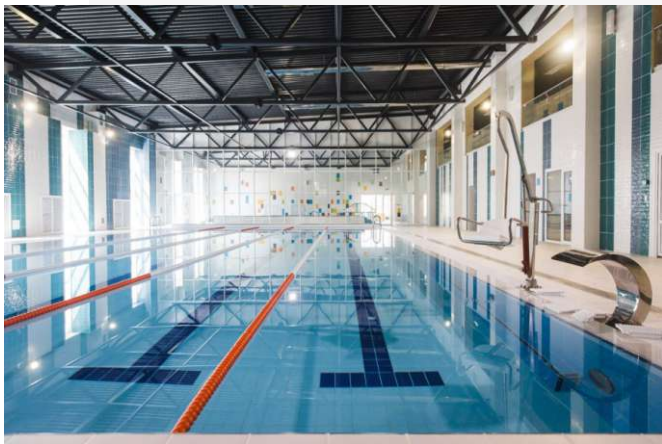
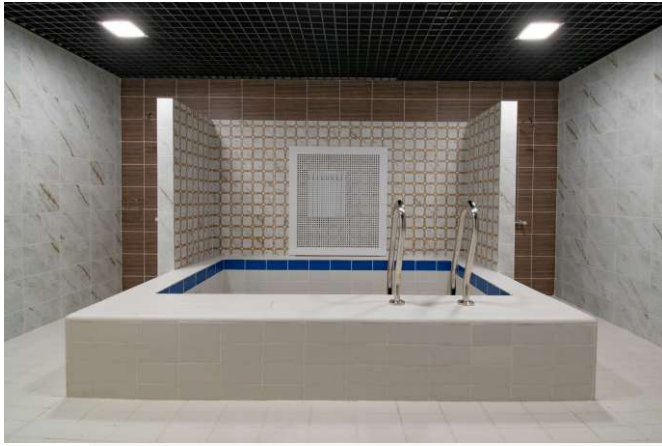


Residential complex "Prestizhino" on the Bogdanovich Street is located in the center of Minsk, inside the yard territory.

There are apartments with improved modern layout with high energy efficiency enclosures, ceiling height is 3 m, access system to the territory with video surveillance, convenient entrance areas, underground parking with the number of places equal to the number of apartments in the complex



Residential complex "Prestizhino", Minsk



Sports and Health complex "AquaMarin", Maryina Gorka city



Sports and Health complex "AquaMarin".

The complex, was built almost in the center of Maryina Gorka city, is cozy and, most importantly, functional. There you can not only do sports, but also relax: for this there is a sauna and a hammam, a cafe. Barrier-free environment, large parking in front of the complex - all the nuances were taken into account in the construction of Sports and Health complex.



Sports and Health complex "AquaMarin", Maryina Gorka city



Republican Unitary Air Navigation Services Enterprise "Belaeronavigatsia"



Republican Unitary Air Navigation Services Enterprise "Belaeronavigatsia".

The center is located on the lands of the Volmyanskoe forestry of the Smolevichi region at the southern border of the Sokol microdistrict.

The center includes an administrative building, a checkpoint, a power unit and a diesel generator, emergency radio antenna tower.



Republican Unitary Air Navigation Services Enterprise "Belaeronavigatsia"



Before reconstruction



After reconstruction

Reconstruction of the Church of Saint Simeon and Saint Helena



Reconstruction of the Church of Saint Simeon and Saint Helena. The destroyed masonry was restored and measures for brick conservation and wall strengthening, replaced windows, doors, roof were carried out, all decorative elements is in order.

In some places, the old brick was replaced with a new one, which was made directly at the construction site. The drainage systems were installed, the previously existing forged gratings were restored and new were made.

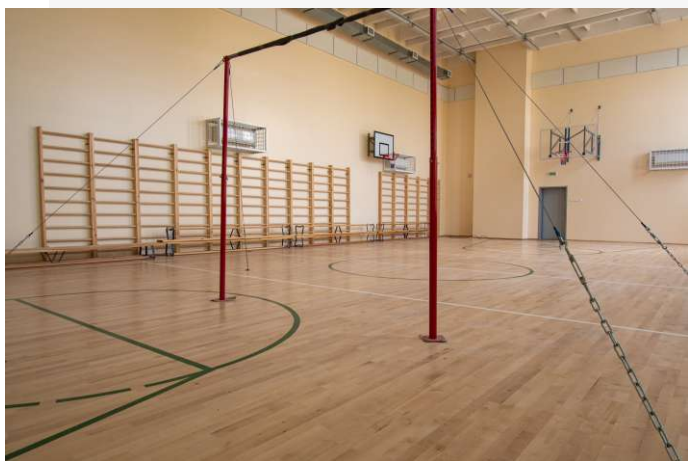
All engineering networks, internal and external communications were replaced, the supporting structures of the underground level were reinforced and the adjacent territory was improved.

During the restoration process, the original stone foundation was uncovered.





Before reconstruction



After reconstruction



"Specialized Lyceum of the Ministry of Internal Affairs of the Republic of Belarus", Minsk



Reconstruction with major repairs of the complex of buildings of the Educational Institution "Specialized Lyceum of the Ministry of Internal Affairs of the Republic of Belarus" at the address: Minsk, st. Stakhanovskaya, 13.

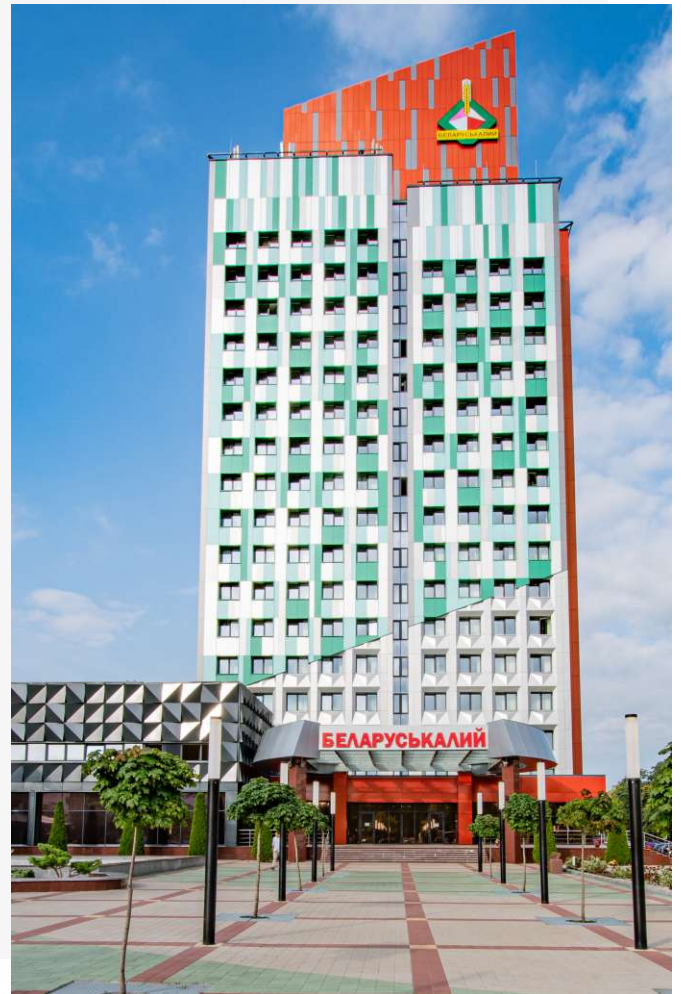
The superstructure of the 4th and 5th floors and the reconstruction of the premises were completed. The building has 5 floors with a basement, the total area is 5553.20 m². In the basement there are technical rooms, office and living rooms of service personnel, storage rooms and a room for installing modular cooling chambers. On the 1st floor there are: a lobby, a museum, storage rooms, administrative and utility rooms, bathrooms. On the 2,3,4,5 floors there are sleeping rooms for 250 places, rooms for psychological relief, premises for the heads of the course, premises for educators, utility rooms, showers, bathrooms. Brick walls made of hollow bricks are used as enclosing structures of the superstructure of the 4th and 5th floors. On the 5th floor, a ventilated facade system with an external facing with profiled aluminum sheet with a vertical rebate was applied.





Before reconstruction

After reconstruction



The building of the engineering and laboratory building of OJSC "Belaruskali", Soligorsk



Modernization of the facades of the engineering and laboratory building of OJSC "Belaruskali" in Soligorsk, including:

- thermal rehabilitation of a building with a ventilation facade made of composite panels;
- replacement of exterior Windows, stained glass Windows and doors;
- art suspension of the building facades (a facade);
- LED screen device on the facade;

As a result, not only the main facades, but also the superstructure of the upper part of the building received a new look. Thanks to this, the building has increased in height and reached 81 m.





Petrikov mining and processing complex began, of OJSC "Belaruskali"



The construction of the Petrikov mining and processing plant is the largest investment project of OJSC "Belaruskali", one of the largest producers and exporters of potash fertilizers in the world.

In 2017, there were active construction works of a large complex of ground facilities, as well as shaft sinking. An important historical event marked the date of September 7, 2018 for OJSC Belaruskali. At the Petrikov mining and processing complex, a potash horizon was opened, the first ore was mined.

The capacity of Petrikov mining and processing complex will be 1.5 million tons of concentrate per year. It is planned to reach the design capacity in 2021.





Nezhinsky mining and processing plant, FLLC "Slavkaliy"



The second enterprise in Belarus for the extraction of potash ore and the production of potash fertilizers with a capacity of up to 2 million tons of potassium chloride per year will be put into operation in the Lyubansky district of the Minsk region.

The construction of the mining and processing complex began in 2016. In the project there are a mining complex, an enrichment plant, a gas turbine power plant for its own needs, railroad, road, housing and other infrastructure.

The construction of the facility is implemented by FLLC "Slavkalii" with the participation of the Chinese General contractor of the energy profile "China State Energy Engineering Corp."





Miory metal rolling plant

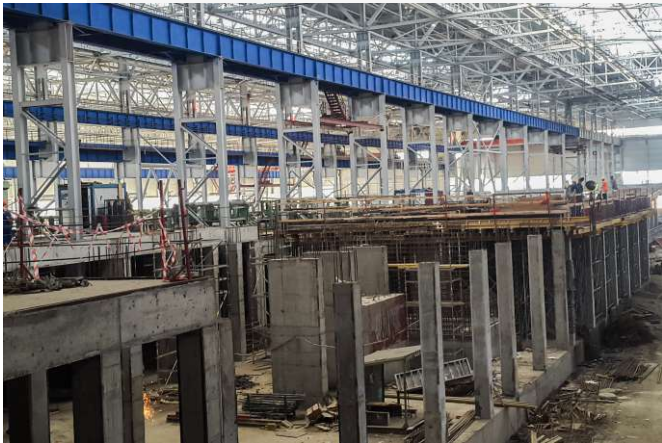


Miory metal rolling plant. A huge facility that will be the third of its kind in Europe. The plant is being built at a production site located nearby (within 1 km) the city of Miory, Vitebsk region, Republic of Belarus. The total area of the industrial complex, located on the land area of 40.2 hectares, will be about 200,000 sq. m., an administrative building with a total area of 3,000 sq.m.

Miory Metal Rolling Plant was designed and built in accordance with European standards in accordance with the legislation of the Republic of Belarus and the requirements in the field of industrial safety and ecology, will be the only manufacturer of electrolytic tin and cold-rolled sheet in the Republic of Belarus and will take its rightful place among the manufacturers of tinplate in the CIS countries and in Europe.

Uniqueness of the new plant lies in the use of modern energy-saving environmentally friendly equipment and technologies that make it possible to produce highly liquid quality products with minimal costs. The project capacity will be reached in the 3rd quarter of 2021.





Tulachermet-Steel casting and rolling complex "Tulachermet-Stal", Tula

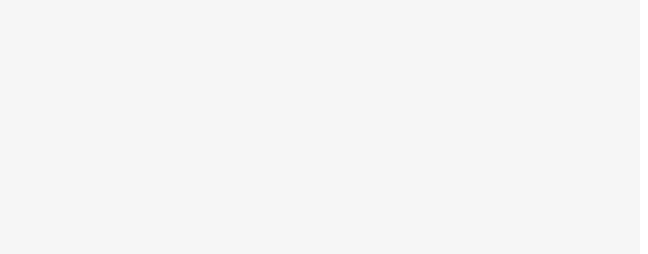
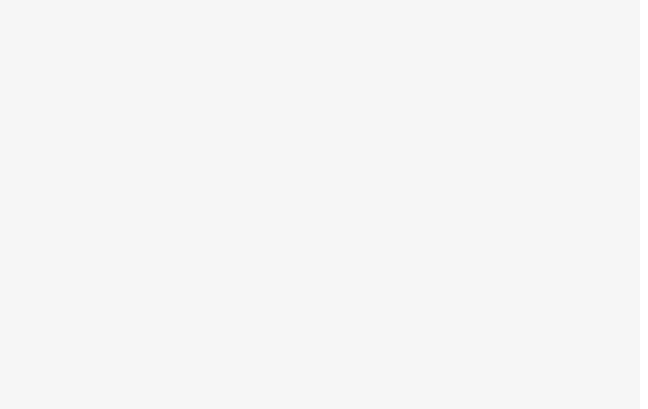


Tulachermet-Steel casting and rolling complex together with the production assets of OJSC Tulachermet located nearby became the first integrated producer of high-quality long products from converter steel in the history of Russia. The plant has become one of the largest and most important projects in the metallurgical industry implemented over the past 25 years.

It was OJSC “Minskpromstroy” who was engaged in the construction of foundations for the main technological equipment of mills, underground storage facilities for ferroalloys, water treatment, electrical rooms and rooms for hydraulics and many other sections of the huge casting and rolling complex. OJSC “Minskpromstroy” was the largest contractor at this facility.

We have filled in 130 thousand cubic meters of concrete. About 800 Belarusian specialists were employed on a rotational basis, and about 400 were on site at the same time.





Vyksa Steel Works, Vyksa

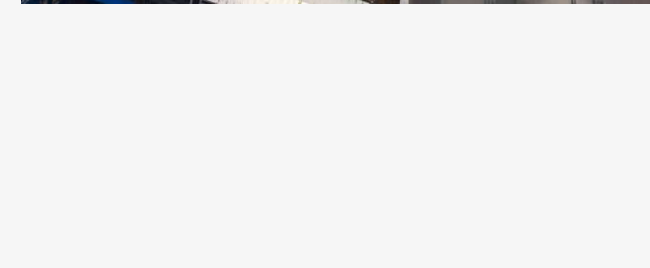
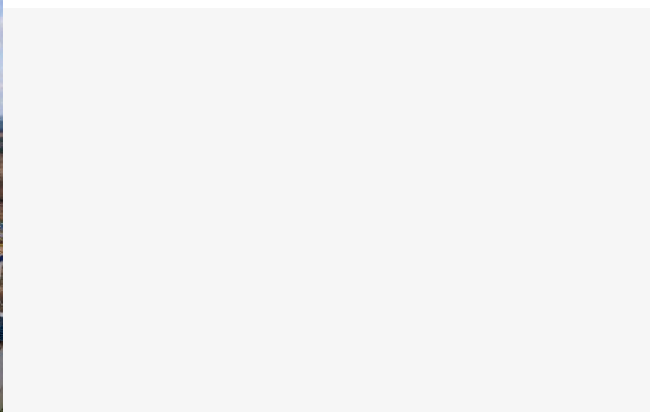


Vyksa Steel Works (VSW) is one of the oldest centers of Russian metallurgy and the leaders of pipe and wheel rolling production in Russia.

In the past few years, significant investment projects have been implemented at VSW. This includes the reconstruction of pipe mills in the second and third pipe shops, modernization of finishing lines in the third and fifth shops, and reconstruction of the first line of anti-corrosion coating of large-diameter pipes.

OJSC "Minskpromstroy" took part in the construction of foundations for the main technological equipment in 2018-2019.





LLC “EuroChem-Usolskiy potash plant”, Perm region



LLC “EuroChem Usolskiy potash plant” is the largest producer of mineral fertilizers in Russia and is one of the three largest European and ten largest global companies in the industry.

In 2017, in the Perm region in the city of Berezhnyaki at the Usolskiy potash plant, OJSC “Minskpromstroy” specialists built water intake and treatment facilities, overpasses, reloading units, cooling towers, installed metal structures, and poured foundations.

A significant event for EuroChem in 2018 is the launch of potassium chloride production at the Usolskiy potash plant. With the development of the design capacity, the total capacity of 2.3 million tons of potassium chloride per year is the most mass production of potash fertilizer.



The largest construction company in Belarus
with 70 years of experience in construction
services



OJSC “Minskpromstroy”



Open Joint-Stock Company "Minskpromstroy"
Republic of Belarus, 220034 Minsk, Voyskovoy lane, 12
тел. +375173738573
e-mail: info@mps.by
www.minskpromstroy.by

